

# Scrutinizing ITC-study on the formation of inclusion complexes of nonionic surfactant Triton X-100 and cyclodextrins

Bernd-Kristof Müller · Helmut Ritter

Received: 15 October 2010 / Accepted: 25 March 2011 / Published online: 24 April 2011  
© Springer Science+Business Media B.V. 2011

**Abstract** The formation of host–guest-complexes of Triton X-100 (**1**), a nonionic surfactant comprising of an oligo ethylene glycol chain and a bulky hydrophobic tail, with alpha-, beta- and gamma-Cyclodextrin ( $\alpha$ -,  $\beta$ - and  $\gamma$ CD) has been investigated by isothermal titration calorimetry (ITC). Especially, the interaction of  $\beta$ CD with Triton X-100 has been subject-matter of a series of analytical studies though the results are contradictorily. Equilibrium constants diversify in the range of 200–200000 M<sup>-1</sup>. Among these, even an isothermal titration calorimetric study is reported, indicating an association constant of 9100 M<sup>-1</sup>. In contrast, the findings we report in the present paper approve an exceptionally high association constant reported just recently. Moreover, the stoichiometry of the formed complexes and the binding sites were investigated.  $\beta$ CD and  $\gamma$ CD interact with the octylphenyl residue of **1**. In contrast,  $\alpha$ CD forms *pseudorotaxanes* by threading onto the oligo ethylene glycol-part of the surfactant molecule.

**Keywords** Cyclodextrin · Triton X-100 · Isothermal titration calorimetry · UV-titration · Non-ionic surfactant · Host–guest-interaction

## Introduction

Cyclodextrins (CDs) are semi natural cyclic oligosaccharides based on  $\alpha$ -(1,4)-linked glucopyranose units. The cone-shaped molecules are prefixed by  $\alpha$ -,  $\beta$ - or  $\gamma$ -, due to their number of glucopyranose units—six, seven or eight. Their three-dimensional structure and some characteristic values are shown in Table 1. Besides  $\alpha$ -,  $\beta$ - and  $\gamma$ CD, CDs with more subunits are known but they are not of technical relevance.

Arising from its cone-shaped structure, CDs are hydrophilic molecules with a hydrophobic cavity. Hydrophobic molecules of adequate size are capable to penetrate into this cavity in polar media. Driving forces are both Van der Waals interactions as well as the increasing entropy of the system by liberation of the solvating molecules—known as hydrophobic effect.

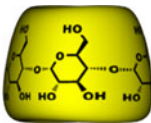
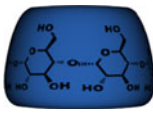
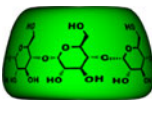
In addition, hydrogen-bondings at the rim of the cavity may play a certain role [1–5].

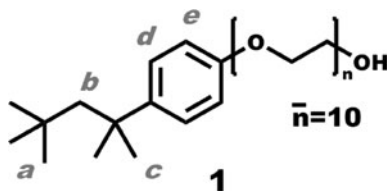
Due to these rather weak interactions, equilibrium constants (K) for host–guest-complexes are rarely higher than  $5 \times 10^4$  M<sup>-1</sup> [1]. For comparison, a chelate-complex of calcium ions and EDTA (ethylenediaminetetraacetic acid) in MES-buffer has a value of  $K = 2 \times 10^6$  M<sup>-1</sup> [6].

In order to assemble most stable supramolecular structures, complexes with high equilibrium constants are of great interest. Recent studies point out that the nonionic surfactant Triton X-100 (**1**, Fig. 1) is applicatively in this context. A photophysical study of inclusion of **1** into  $\beta$ CD by He et al. [7] confirmed the findings of Du et al. [8, 9] of an extraordinary high value of  $K > 1 \times 10^5$  M<sup>-1</sup>. Certainly, these results differ still in the stoichiometry of the formed complexes. He et al. report the coexistence of a 1:1 and 2:1 (host:guest) complex of  $\beta$ CD and **1**, whereas Du et al. assume a 1:1 stoichiometry. Moreover, previous studies applying varying methods report values of K

B.-K. Müller · H. Ritter (✉)  
Institute for Organic Chemistry and Makromolekular Chemistry,  
Heinrich-Heine-Universität, Universitätsstraße 1, 40225  
Düsseldorf, Germany  
e-mail: hritter@uni-duesseldorf.de  
URL: [http://www.chemie.uni-duesseldorf.de/Faecher/Organische\\_Chemie/OC2/ritter](http://www.chemie.uni-duesseldorf.de/Faecher/Organische_Chemie/OC2/ritter)

**Table 1** Overview of the chemical structure of CDs [1, 2]

0.78 nm			
Name	$\alpha$ CD	$\beta$ CD	$\gamma$ CD
Number of glucopyranose units	6	7	8
Widest diameter (nm)	1.37	1.53	1.69
Cavity diameter (nm)			
On the primary face	0.47	0.60	0.75
On the secondary face	0.53	0.65	0.83

**Fig. 1** Chemical structure of Triton X-100

between 145 and  $3 \times 10^4 \text{ M}^{-1}$  with stoichiometries of 1:1 or 2:1 respectively [10–14]. Among these, even an isothermal titration calorimetric study is reported, indicating an association constant of  $9100 \text{ M}^{-1}$  and a stoichiometry of 1:1 [15]. Against this background, the situation can be considered vaguely at most and needs clarification.

In the present study, we therefore revise the reported data by a new isothermal titration calorimetry (ITC) study. ITC is viewed as ‘method of choice’ for characterization thermodynamics and stoichiometry of inclusion complexes [16]. An important advantage is the direct determination of thermodynamic data without applying any auxiliary substances which may affect inaccuracies.

## Experimental

### Materials

Cyclodextrins were kindly provided by Wacker-Chemie, Germany and dried in a microwave drying system SAM 255 (CEM) prior to use. Triton X-100 was purchased from Sigma-Aldrich, Germany, and dried in vacuum for 24 h.

### Instruments

Isothermal titration calorimetry experiments were performed on a VP-ITC Micro-Calorimeter from MicroCal (Northampton, MA) controlled by MicroCal’s VP viewer 2000 ITC software.  $^1\text{H-NMR}$  measurements were performed

in  $\text{D}_2\text{O}$  using a Bruker Advance DRX 500 spectrometer at 500.13 MHz. The  $\delta$  scale was calibrated to the solvent signal at  $\delta = 4.79$  ppm. UV–visible-spectra were recorded on a Nicolet UV540 spectrometer in the range from 210 to 310 nm in a quartz glass cuvette with a layer thickness of 1 cm. The collection interval was set on  $0.2 \text{ nm}$  and the collection speed to  $30 \text{ nm min}^{-1}$ .

### Methods

ITC-titrations were performed at  $25^\circ\text{C}$ . Against a  $0.15 \text{ mM}$  solution of Triton X-100, a  $3 \text{ mM}$  solution of  $\beta$ CD or  $\gamma$ CD or a  $40 \text{ mM}$  solution of  $\alpha$ CD was titrated. Titration was carried out by 40 injections of  $7 \mu\text{L}$  with a spacing time of 300 s. The stirring speed was set on  $300 \text{ min}^{-1}$ . The heat of dilution was determined in a separate experiment and was subtracted from the binding isotherm. Results were calculated by an iterative nonlinear regression (NLR) fit with Origin 7.0 software and the MicroCal LLC ITC add-on.

Job plots observed via  $^1\text{H-NMR}$  spectroscopy were prepared from  $0.18 \text{ M}$  stock solutions in  $\text{D}_2\text{O}$  by simply mixing the appropriate ratios to a total concentration of  $0.18 \text{ M}$ . A measurement with the ratio 9:1 considering **1** vs. CD was left out to prevent formation of micelles. For the determination of the chemical shifts of **1**, a  $0.18 \text{ M}$  solution of **1** in  $\text{D}_2\text{O}$  was analyzed.

UV-titrations were performed by mixing equal volumes of a  $0.19 \text{ M}$  stock solution of **1** in water and CD solutions in water of varying concentrations. These concentrations were distributed in a *pseudo* logarithmic manner and ranged at least over three decades. Final concentrations of the solutions measured are declared in the correspondent figures.

## Results and discussion

For all complexation studies of Triton X-100 (**1**) experiments should be carried out with special attention to the

concentration of **1**. As a nonionic detergent it forms micelles in water above its critical micelle concentration (CMC). Complex formation of CD with the hydrophobic residue of **1** thus would require a preceding dissociation of the micellar aggregates. To avoid such a competing effect, all measurements were carried out at a concentration of 0.15 mM of **1**. This is definitely below the CMC, which is reported to be 0.22 mM [17].

#### Complexation study of Triton X-100 and $\beta$ CD

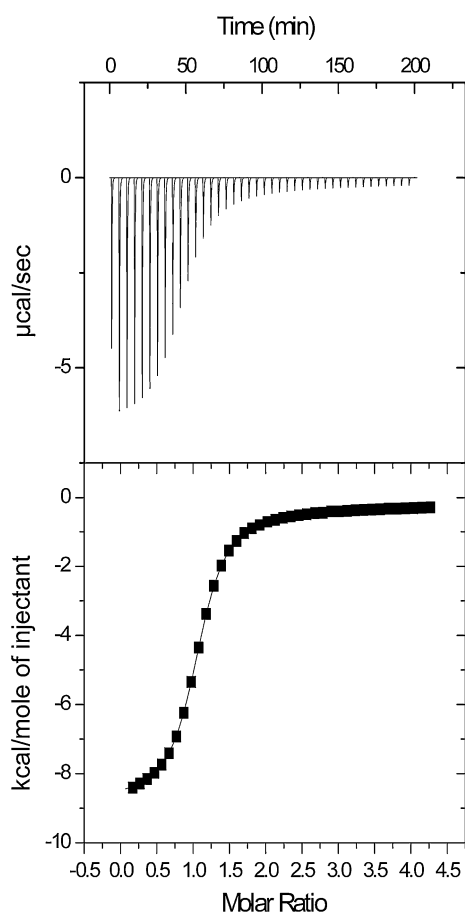
Figure 2 shows the result of an ITC experiment of **1** and  $\beta$ CD. Although concentrations of solutions applied (0.15 mM for **1** and 3 mM for  $\beta$ CD) were exceptionally low, there was still a significant release of heat detectable. This effect alone points to a very high equilibrium constant. Curve-fitting of the  $\Delta H$  plot revealed best accordance with a two sets of sites model with a stoichiometry of 1:1 each and values of  $K_1 = 1.71 \times 10^5 \text{ M}^{-1}$  and  $K_2 = 260 \text{ M}^{-1}$ . To ensure the accuracy of the results, we repeated this measurement five times from which a standard deviation for  $K_1$  of less than 3% emerged.  $K_2$  which is

always less precisely, especially if it differs significantly from  $K_1$ , had a standard deviation of 30%. Additionally, values for the entropy and enthalpy were iterated. They resulted in  $\Delta H_1 = -36.8 \pm 0.1 \text{ kJ mol}^{-1}$  and  $\Delta S_1 = -23.1 \pm 0.6 \text{ J K}^{-1} \text{ mol}^{-1}$ . Results for  $\Delta H_2$  and  $\Delta S_2$  are not presented, as they were too imprecisely.

Table 1 compares the equilibrium constants obtained with those published by other groups. Two things should be noted: First, the values of  $K$ , which differed greatly in the past, now level off at a value of  $K > 1 \times 10^5 \text{ M}^{-1}$  concerning more recent works. Thus, the remarkably high value of  $K$  can be considered to be confirmed. Second, in the past only complexes of **1** and  $\beta$ CD with a 1:1 stoichiometry were discussed. The present study included, there are only four works out of 11 reporting a 2:1 (host:guest) stoichiometry as well. This point is a little surprising, since if the dimensions of the involved molecules are regarded, it becomes apparent that a 2:1 stoichiometry is expectable.  $\beta$ CD has a total height of the cavity of 0.78 nm whereas the shortest length of the hydrophobic tail of **1** can be calculated to 0.85 nm. To confirm the expectation of a 2:1 stoichiometry, we performed  $^1\text{H-NMR}$  and UV-experiments (Table 2).

Figure 3 shows the result for a Job plot (method of continuous variation) observed via  $^1\text{H-NMR}$ -spectroscopy [19]. For a complex with 1:1 stoichiometry one would expect a triangular plot with a single maximum at a molar fraction of 0.5. In the case of other stoichiometric ratios, the maximum would be shifted to the appropriate molar fraction. However, if the equilibrium constants involved are not of the same magnitude, slopes become irregularly and the method no longer can give any information about the stoichiometric ratio [20]. This is clearly the case for the complex formation of **1** and  $\beta$ CD. Also a UV-titration approved a stoichiometry other than 1:1 as no isosbestic point could be observed (Fig. 4). Accordingly, the expectation of a 2:1 complex is most probable.

The question remains where the  $\beta$ CD molecules are located on **1**. Three workgroups have investigated this topic by different NMR-methods and shared the same conclusion: Both binding sites for  $\beta$ CD are provided by the hydrophobic part of **1** [7, 18, 21]. However, none of these studies tried to determine, where the preferred binding site is. In the present work, we try to draw a conclusion from the method of continuous variation. Figure 5 displays the differences of the chemical shifts of proton signals of **1** depending on the molar fraction of  $\beta$ CD. While the signals of the aliphatic protons *a* and *c* (designation referred to Fig. 1) already shifted strongly upon small  $\beta$ CD addition, signals of the aromatic protons *d* and *e* changed when a greater amount of  $\beta$ CD was added. Consequently, the aliphatic residue of **1** seems to interact with  $\beta$ CD more favorably. Formation of a 2:1 complex occurs probably



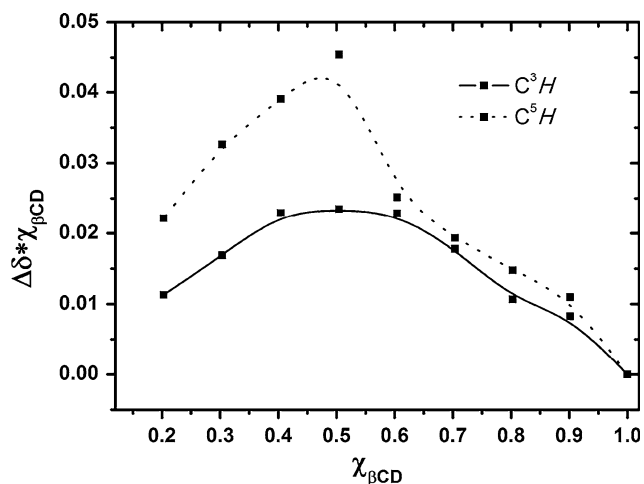
**Fig. 2** ITC result for a titration of a 3 mM solution of  $\beta$ CD against 0.15 mM solution of **1** in water

**Table 2** Comparison of own results for the equilibrium constants of inclusion complexes of **1** and  $\beta$ CD with those published in the past

$K_1$ ( $M^{-1}$ )	$K_2$ ( $M^{-1}$ )	Method	Workgroup, year
145	–	Surface tension	Nelson, 1989 [10]
3327	–	Fluorescence	Warner, 1991 [11]
$(1.80 \pm 0.02) \times 10^5$	–	Room-temperature phosphorescence	Du, 1996 [8]
$9400 \pm 1300$	–	Fluorescence	Bhattacharyya, 1998 [12]
$5.8 \times 10^6 M^{-2}$	–	Surface tension	Saito, 1998 [18]
5130	11	Fluorescence	Buschmann, 1999 [14]
$9100 \pm 260$	–	ITC	Eli, 2000 [15]
$3.05 \times 10^4$	–	Fluorescence	Du, 2004 [13]
$(1.82 \pm 0.15) \times 10^5$	–	Fluorescence	Du, 2006 [9]
$(1.14 \pm 0.32) \times 10^5$	$(1.18 \pm 0.05) \times 10^3$	Fluorescence <sup>a</sup>	Shen, 2008 [7]
$(1.13 \pm 0.05) \times 10^5$	$(3.71 \pm 0.27) \times 10^2$	Fluorescence <sup>b</sup>	
$(1.71 \pm 0.04) \times 10^5$	$260 \pm 80$	ITC	Own work

<sup>a</sup> Auxiliary molecule as fluorescent probe

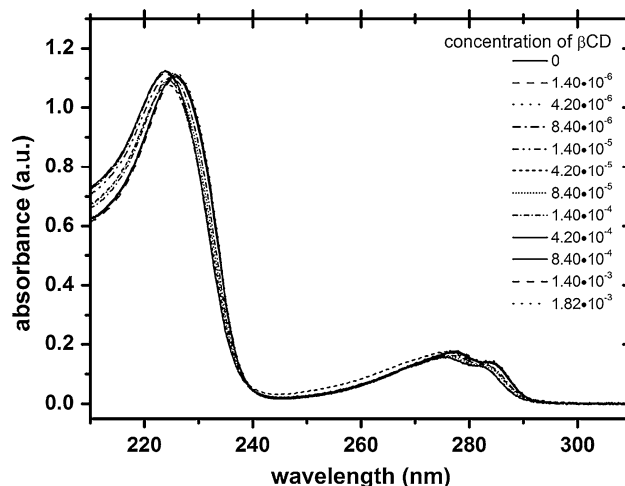
<sup>b</sup> **1** as fluorescent probe



**Fig. 3** Job plot for **1** and  $\beta$ CD. Shifting of the proton signals at position  $C^3$  and  $C^5$  of the glucopyranose subunits of  $\beta$ CD is displayed depending on the molar fraction of  $\beta$ CD

most likely when the first  $\beta$ CD molecule slides a bit in the direction of the oligo ethylene glycol (OEG) chain and thereby deblocks the terminal *tert*-butyl group. This group then can be included into a second  $\beta$ CD molecule (Fig. 6). This scenario is backed by the observation that hardly any shift of the OEG-proton signals appeared. Hence, the OEG chain is not involved in the complex formation of **1** and  $\beta$ CD in any way. Accordingly, the value  $K_2$  not alone describes the formation of the 2:1 complex but implies also a destructive fraction for the rearrangement of the 1:1 complex. That might be an explanation for the rather low value of  $K_2$  [1].

Here it should be clarified that the previously described findings do not give any information about the orientation

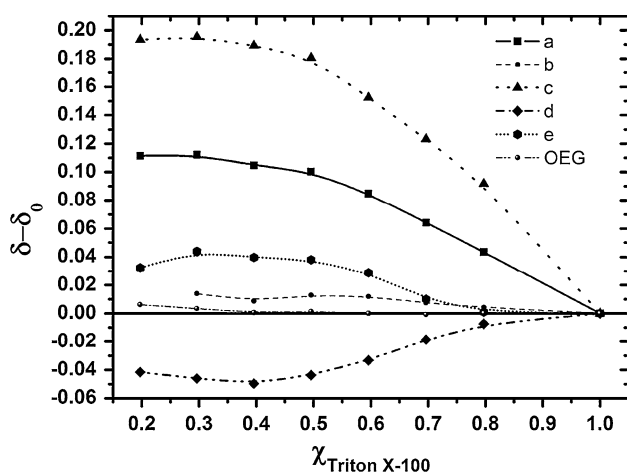


**Fig. 4** UV-spectra for the titration of  $\beta$ CD (values are given in M) against **1** (concentration kept constant at 0.095 mM). Obviously, no distinct isosbestic point is observable

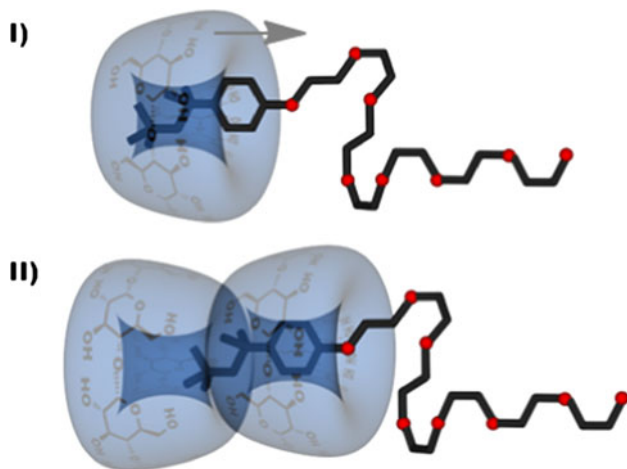
of the  $\beta$ CD molecules on **1**. However, an intrusion of **1** through the secondary face of  $\beta$ CD as it is shown in Fig. 6 is most probable. A further head-to-head and tail-to-tail orientation is then favored, too [5].

#### Complexation study of Triton X-100 and $\gamma$ CD

Same analysis as explained in detail for  $\beta$ CD and **1** was performed for the system  $\gamma$ CD and **1**. In contrast to  $\beta$ CD, a Job plot via  $^1$ H-NMR (Fig. 7) and a UV-titration proved the formation of a 1:1 complex. Calculation of the ITC curve with a one set of site model gave a value of  $K_1 = (2.16 \pm 0.09) \times 10^4 M^{-1}$ .  $\Delta H_1$  was estimated to  $-11.6 \pm 0.21$  kJ mol $^{-1}$  and  $\Delta S_1$  to 44.0 J K $^{-1}$ mol $^{-1}$ .



**Fig. 5** Differences of  $^1\text{H}$ -NMR shifts of **1** upon addition of  $\beta\text{CD}$

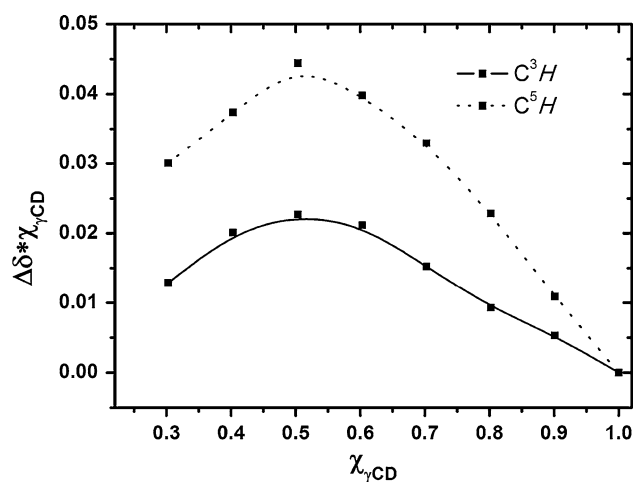


**Fig. 6** Most likely scenario for the stepwise complex formation of **1** and  $\beta\text{CD}$ . In a first step mainly the aliphatic residue of **1** is included into the cavity of  $\beta\text{CD}$  (I). By sliding into the direction of the OEG chain  $\beta\text{CD}$  deblocks the terminal *tert*-butyl group which then can be included into a second  $\beta\text{CD}$  molecule (II)

Since the aromatic part of **1** is fully involved into the complex formation, it is possible to calculate  $K$  also by an iterative nonlinear regression (NLR) fit from the UV-dataset [22]. By Eq. 1, it is possible to get all relevant parameters:

$$A = \frac{A_0 + A_1 K_1 [\text{CD}]_0^n}{1 + K_1 [\text{CD}]_0^n} \quad (1)$$

Where  $A$ ,  $A_0$  and  $A_1$  are the absorption intensities of the measurement mixture, uncomplexed **1** and the complex of  $\gamma\text{CD}$  and **1** respectively. Applying this equation (Fig. 8) the following values are obtained:  $A_0 = 0.547 \pm 0.002$ ,  $A_1 = 0.697 \pm 0.003$ ,  $K_1 = 21100 \pm 16200 \text{ M}^{-1}$  and  $n = 1.16 \pm 0.09$ . Unfortunately, the margin of error is

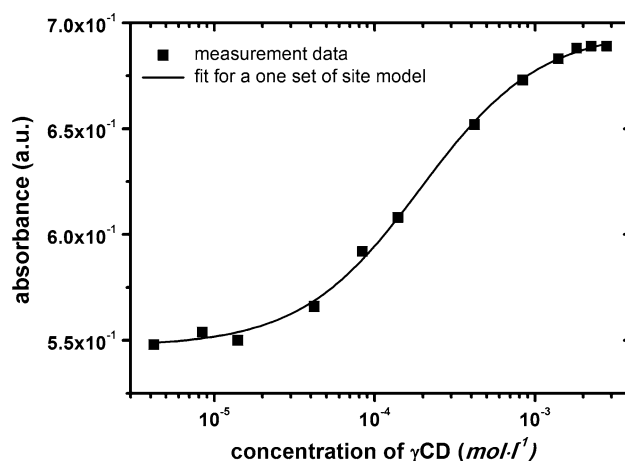


**Fig. 7** Job plot for **1** and  $\gamma\text{CD}$ , showing for both curves a nearly perfect triangular shape with a maximum at a molar ratio of 1:1

very high for  $K_1$ . Nevertheless, it is worth noting that the estimated value is nearly the same as that from the ITC experiment.

Table 3 compares the results for  $K_1$  with those from literature. In contrast to  $\beta\text{CD}$  the situation is clearer for the complex formation of  $\gamma\text{CD}$  and **1**. With the exception of the work of Nelson et al. the reported values of  $K$  are at least of the same magnitude.

Buschmann et al. are the only workgroup, who postulated also a 2:1 complex. This conclusion was drawn from the comparison of the margin of errors for a one set of site and a two sets of sites NLR-fit of the Fluorescence data set. However, such an evaluation is always limited to the accuracy of the data collection. Since the latter model has more free parameters to compensate inaccuracies of the data set, it usually will give the better fit [20]. So this work is a good example how valuable additional methods like the method of continuous variation are in order to get the



**Fig. 8** NLR-fit for the UV-data set from the titration of  $\gamma\text{CD}$  against **1**

**Table 3** Comparison of own results for the equilibrium constants of inclusion complexes of **1** and  $\gamma$ CD with those published in the past

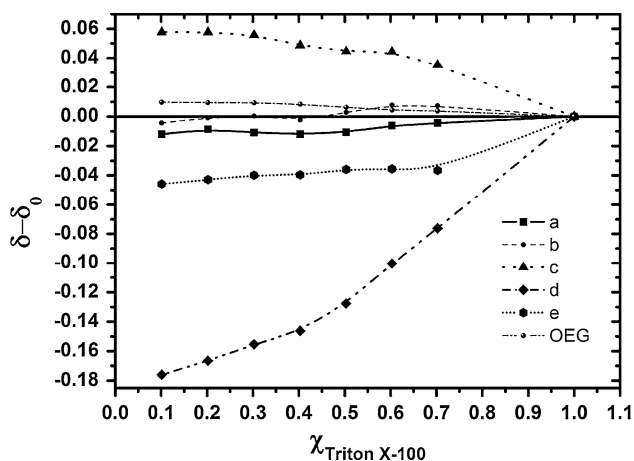
$K_1$ ( $M^{-1}$ )	$K_2$ ( $M^{-1}$ )	Method	Workgroup, year
760	–	Surface tension	Nelson, 1989 [10]
11000	–	Surface tension	Saito, 1998 [18]
38000	205	Fluorescence	Buschmann, 1999 [14]
$21100 \pm 16000$	–	UV-titration	Own work
$21600 \pm 900$	–	ITC	Own work

right stoichiometric ratio. Although sometimes an additional experiment has to be carried out, results obtained normally are superior to a statistical evaluation.

As for  $\beta$ CD the binding site of  $\gamma$ CD on **1** was investigated. In accordance to Saito et al. significant interactions were found for the proton signals *c* and *d* of **1**, whereas the signals of *a* and *e* are only slightly shifted (Fig. 9) [18]. Hence, the former are located deep into the cavity and the latter can be found at the openings of  $\gamma$ CD.

#### Complexation study of Triton X-100 and $\alpha$ CD

Even the complex formation of  $\alpha$ CD and **1** was investigated. In contrast to  $\beta$ - and  $\gamma$ CD,  $\alpha$ CD does not interact with the hydrophobic moiety of **1**. A proof is given by the fact that no change of the UV-spectrum of **1** upon addition of  $\alpha$ CD was observed. This coincides with the expectations, since the *tert*-octylgroup is too bulky for the small cavity of  $\alpha$ CD. However, in an ITC experiment a small heat release could be detected. This exothermal effect can be led back on the formation of *pseudorotaxane* structures by threading from  $\alpha$ CD onto the OEG chain of **1**. The similar *pseudopolyrotaxanes* from poly(ethylene glycol) (PEG) and  $\alpha$ CD are among the best studied polyrotaxane structures. They form spontaneously from a mixture of its components [5, 23]. Harada et al. also investigated the

**Fig. 9** Differences of  $^1\text{H-NMR}$  shifts of **1** upon addition of  $\gamma$ CD

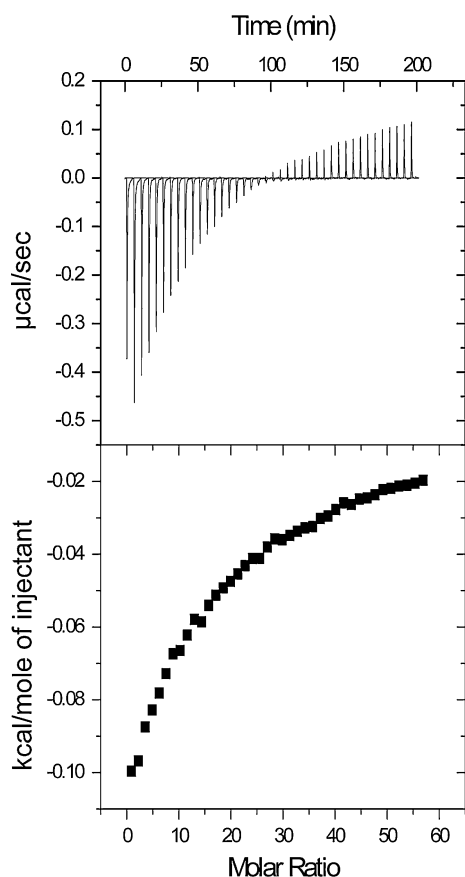
formation of inclusion complexes of monodisperse OEGs with  $\alpha$ CD. Above a degree of polymerisation of three, *pseudorotaxane* structures are formed with a stoichiometry of 1:2 considering the proportion of  $\alpha$ CD vs. the OEG repeating unit. If the degree of polymerisation exceeds 12 the solutions of the *pseudorotaxanes* have to be heated to prevent precipitation [24]. The results of this study can be regarded as a model analysis for the complex formation of **1** and  $\alpha$ CD. Indeed, the same group studied the binding behaviour of **1** and  $\alpha$ - and  $\beta$ CD respectively. They identified as first group the site selective binding behaviour of **1**. Though, they did not respond to the question how many  $\alpha$ CD molecules are threaded onto the OEG chain [24]. With respect to their previous study, a maximum mean stoichiometric ratio of 5:1 ( $\alpha$ CD:**1**) is thinkable, since the average degree of polymerisation of the OEG chain of **1** is 10. However, as a second group Saito et al. investigated the complex formation of  $\alpha$ CD and **1** and examined also the binding stoichiometry. They prepared a precipitate from an aqueous  $\alpha$ CD solution by addition of **1** which emerged to be a *pseudorotaxane* with a stoichiometry of 2:1 [18].

In contrast, under the conditions applied in the present study there was no precipitate formed. This is clearly supported by the result of the UV-titration where no decrease in the absorption intensity was observed upon  $\alpha$ CD addition. However, we could not determine the complex stoichiometry by any of our methods either.

A stoichiometric ratio of 5:1 the *pseudorotaxane* is still thinkable though this question remains open. Consequently, it is not possible, to calculate reasonable complexation parameters from the ITC experiment, as the number of sequential binding sites is not known. Anyway, the  $\Delta H$  plot is only of moderate quality, even after improvement of the measurement conditions. In order to detect a significant heat release, the concentration of the solution of  $\alpha$ CD had to be raised to 40 mM (Fig. 10). Nevertheless, the maximal heat released upon addition of one equivalent of  $\alpha$ CD was just  $-420 \text{ J mol}^{-1}$ . So at least it is possible to say that the *pseudorotaxane* formed from  $\alpha$ CD and **1** is much weaker than those from  $\beta$ - or  $\gamma$ CD and **1**.

#### Conclusion

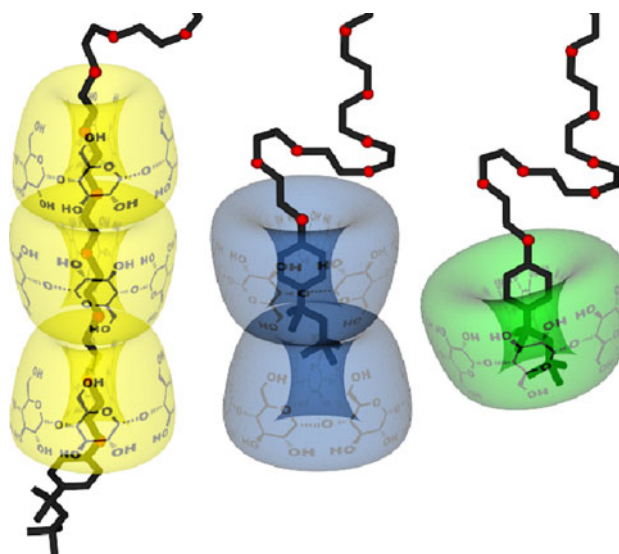
The present study reappraises the data reported so far on the complexation behaviour of  $\alpha$ -,  $\beta$ - and  $\gamma$ CD and Triton X-100 (**1**) by means of ITC experiments. As yet, these data were quite confusing for they differed in the complex stoichiometry and especially in the magnitude of the equilibrium constants. In order to get more reasonable results for the right complex stoichiometry, UV-titrations and Job plots were carried out in this work. Thus, the



**Fig. 10** ITC result for a titration of a 40 mM solution of  $\alpha$ CD against 0.15 mM solution of **1** in water

accuracy of the adopted stoichiometry for the fitting models applied in ITC experiments could be approved.

The results obtained confirm that  $\beta$ CD and **1** form a 1:1 and 2:1 complex with an exceptionally high  $K_1 = 1.71 \times 10^5 \text{ M}^{-1}$  and a much lower  $K_2 = 260 \text{ M}^{-1}$ . Both CD molecules are located on the hydrophobic residue of **1**, as was shown by the shift on  $^1\text{H-NMR}$  signals. Thereby, the preferred binding site could be determined to be the *tert*-octylgroup. A second binding site is presumably provided by a sliding of the first  $\beta$ CD onto the phenyl-group, whereby the terminal *tert*-butyl group is deblocked.  $\gamma$ CD forms with **1** a 1:1 complex with a value of  $K_1 = 21600 \text{ M}^{-1}$ .  $\gamma$ CD is located on the hydrophobic residue of **1**, too. From ITC-experiments no equilibrium constants could be calculated for the *pseudorotaxanes* formed from  $\alpha$ CD and **1** by threading of  $\alpha$ CD onto the OEG chain. Also the complex stoichiometry could not be solved. From theoretical considerations, one might expect a maximum mean ratio of 5:1. At least it could be deduced that the equilibrium constant for these complexes are much weaker, then those from  $\beta$ - and  $\gamma$ CD. The site selective complexation behaviour of  $\alpha$ -,  $\beta$ - and  $\gamma$ CD respectively and



**Fig. 11** Complexes of  $\alpha$ -,  $\beta$ - and  $\gamma$ CD with **1**. While for the complexes of  $\beta$ - and  $\gamma$ CD with **1** the maximum stoichiometric ratio is displayed, for the *pseudorotaxanes* of  $\alpha$ CD and **1** stoichiometric ratios up to 5:1 are thinkable

**1** as it was reworked in the present study is shown in Fig. 11.

## References

1. Rekharsky, M.V., Inoue, Y.: Complexation thermodynamics of cyclodextrins. *Chem. Rev.* **98**, 1875–1917 (1998)
2. Del Valle, E.M.M.: Cyclodextrins and their uses: A review. *Process Biochem.* **39**, 1033–1046 (2004)
3. Szejtli, J., Osa, T.: Cyclodextrins. In: Atwood, J.L., Davies, J.E.D., Macnicol, D.D., Vögtle, F., Lehn, J.-M. (eds.) *Comprehensive Supramolecular Chemistry*. Elsevier Science Ltd, Oxford (1996)
4. Szejtli, J.: Introduction and general overview of cyclodextrin chemistry. *Chem. Rev.* **98**, 1743–1753 (1998)
5. Wenz, G., Han, B.H., Muller, A.: Cyclodextrin rotaxanes and polyrotaxanes. *Chem. Rev.* **106**, 782–817 (2006)
6. Christensen, T., Gooden, D.M., Kung, J.E., Toone, E.J.: Additivity and the physical basis of multivalency effects: A thermodynamic investigation of the calcium EDTA interaction. *J. Am. Chem. Soc.* **125**, 7357–7366 (2003)
7. He, Y.F., Shen, X.H., Gao, H.C., He, Y.K.: Spectral and photo-physical studies on the inclusion complexation between Triton X-100 and beta-cyclodextrin: A competitive method using a substituted 3H-indole probe. *J. Photochem. Photobiol. A* **193**, 178–186 (2008)
8. Du, X.Z., Zhang, Y., Huang, X.Z., Jiang, Y.B., Li, Y.Q., Chen, G.Z.: Intense room-temperature phosphorescence of 1-bromonaphthalene in organized media of beta-cyclodextrin and triton X-100. *Appl. Spectrosc.* **50**, 1273–1276 (1996)
9. Du, X.Z., Lu, W.H., Ding, N., Dai, H.X., Teng, X.L., Deng, H.L.: Spectral properties and supramolecular inclusion complexes of beta-cyclodextrin with flexible amphiphilic and rigid compounds. *J. Photochem. Photobiol. A* **177**, 76–82 (2006)
10. Nelson, G., Warner, I.M.: The Formation of Pyrene–Cyclomalto-Oligosaccharide Complexes in the Presence of Non-Ionic Surfactants. *Carbohydr. Res.* **192**, 305–312 (1989)

11. Smith, V.K., Ndou, T.T., Delapena, A.M., Warner, I.M.: Spectral characterization of beta-cyclodextrin–Triton X-100 complexes. *J. Incl. Phenom. Mol. Recogn. Chem.* **10**, 471–484 (1991)
12. Datta, A., Mandal, D., Pal, S.K., Das, S., Bhattacharyya, K.: Interaction of Triton X-100 with cyclodextrins. A fluorescence study. *J. Chem. Soc.* **94**, 3471–3475 (1998)
13. Du, X.Z., Chen, X.G., Lu, W.H., Hou, J.G.: Spectroscopic study on binding behaviors of different structural nonionic surfactants to cyclodextrins. *J. Colloid Interf. Sci.* **274**, 645–651 (2004)
14. Buschmann, H.J., Cleve, E., Schollmeyer, E.: The interactions between nonionic surfactants and cyclodextrins studied by fluorescence measurements. *J. Incl. Phenom. Macrocycl. Chem.* **33**, 233–241 (1999)
15. Eli, W., Chen, W.H., Xue, Q.J.: The association of Triton X surfactants with beta-cyclodextrin. An isothermal titration calorimetry study. *J. Incl. Phenom. Macrocycl. Chem.* **36**, 439–445 (2000)
16. Bouchemal, K.: New challenges for pharmaceutical formulations and drug delivery systems characterization using isothermal titration calorimetry. *Drug Discov. Today* **13**, 960–972 (2008)
17. Tiller, G.E., Mueller, T.J., Dockter, M.E., Struve, W.G.: Hydrogenation of Triton X-100 eliminates its fluorescence and ultraviolet-light absorption while preserving its detergent properties. *Anal. Biochem.* **141**, 262–266 (1984)
18. Saito, Y., Ueda, H., Abe, M., Sato, T., Christian, S.D.: Inclusion complexation of Triton X-100 with alpha-, beta- and gamma-cyclodextrins. *Colloid Surf. A* **135**, 103–108 (1998)
19. Blanda, M.T., Horner, J.H., Newcomb, M.: Macrocycles containing tin—preparation of macrobicyclic lewis acidic hosts containing 2 tin atoms and Sn-119 NMR-studies of their chloride and bromide binding-properties in solution. *J. Org. Chem.* **54**, 4626–4636 (1989)
20. Connors, K.A.: *Binding Constants*. Wiley-Interscience, New York (1987)
21. Harada, A., Okumura, H., Okada, M., Suzuki, S., Kamachi, M.: Site-selective complexation of amphiphilic compounds by cyclodextrins. *Chem. Lett.* **29**, 548–549 (2000)
22. Abou-Zied, O.K.: Investigating 2, 2'-bipyridine-3, 3'-diol as a microenvironment-sensitive probe: Its binding to cyclodextrins and human serum albumin. *J. Phys. Chem. B* **111**, 9879–9885 (2007)
23. Harada, A., Hashidzume, A., Yamaguchi, H., Takashima, Y.: Polymeric Rotaxanes. *Chem. Rev.* **109**, 5974–6023 (2009)
24. Harada, A., Li, J., Kamachi, M.: Formation of inclusion complexes of monodisperse oligo(ethylene glycol)S with alpha-cyclodextrin. *Macromolecules* **27**, 4538–4543 (1994)